

# TORC OIL & GAS LTD.

EAST MANSON UNIT #9

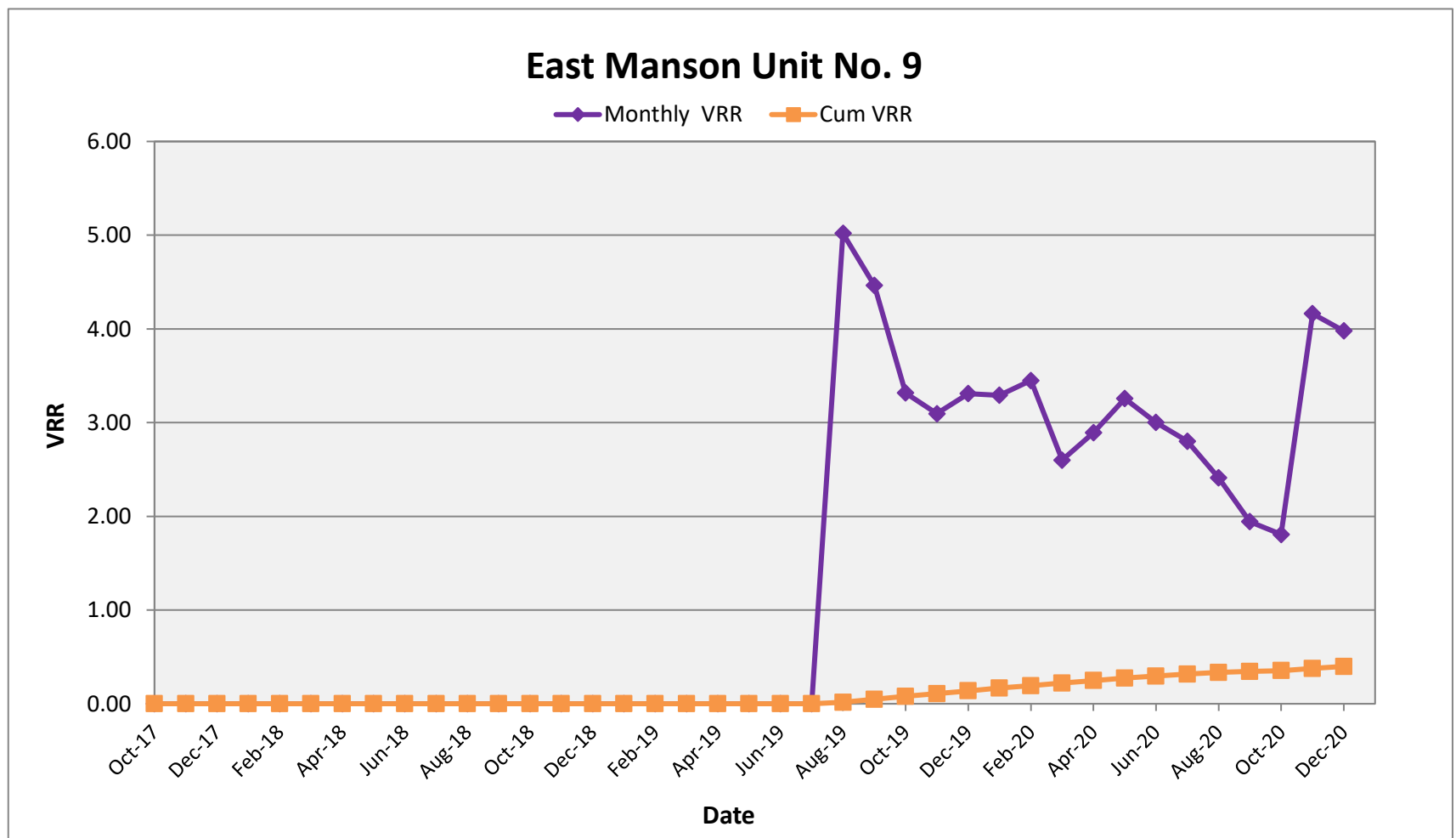
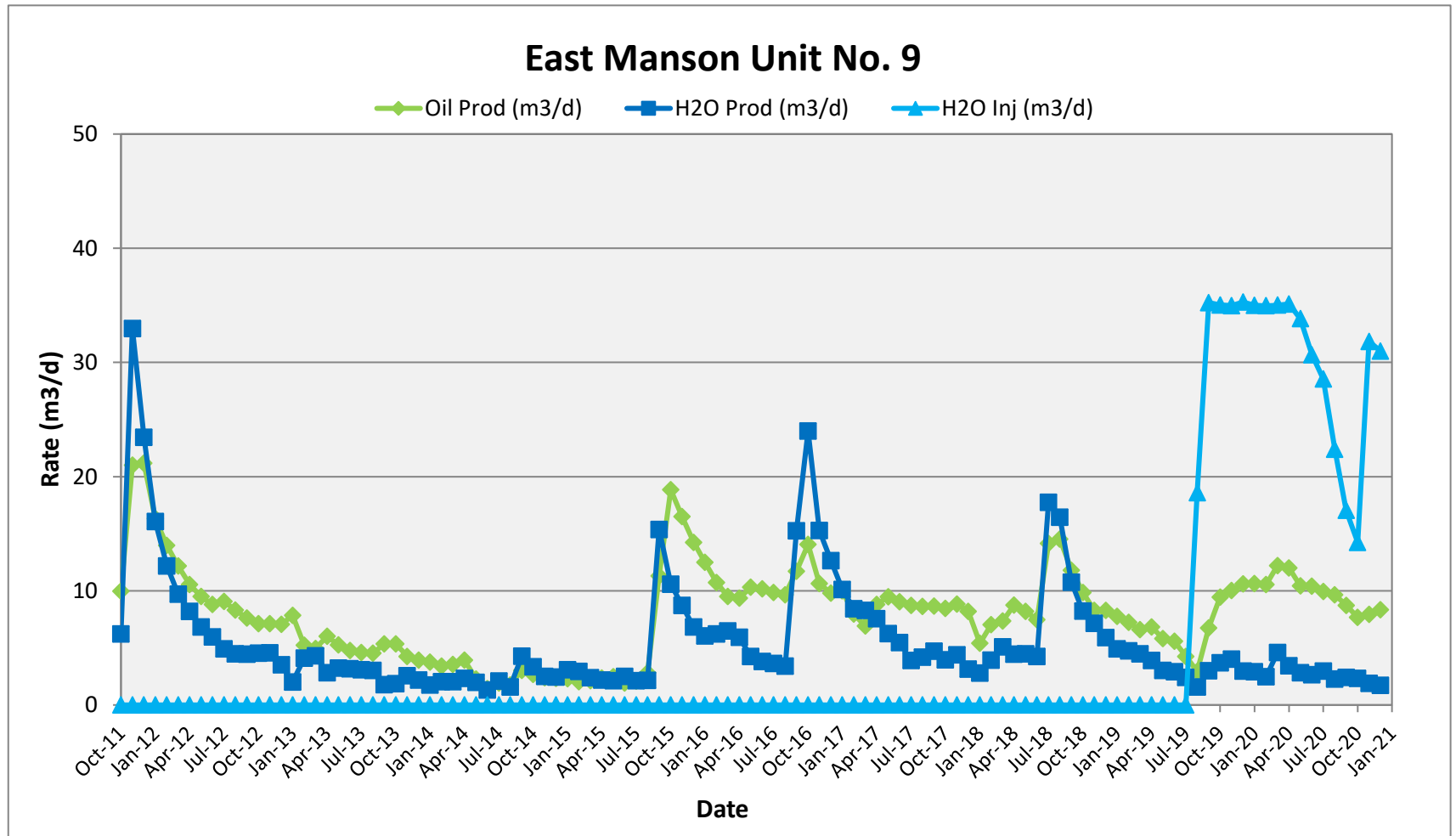
ENHANCED OIL RECOVERY (EOR) ANNUAL REPORT

**Discussion:**

East Manson Unit #9 delivered its first full year of steady waterflood performance in 2020. In its second years of operation since inception, this flood continued to show that injection conformance has been effective in arresting production decline and providing sufficient pressure maintenance to the reservoir.

In 2020, TORC executed two acid stimulation on the injection wells within the unit to bump injection rates back up to target. These stimulations were successful in restoring injection rates and oil rates responded accordingly.

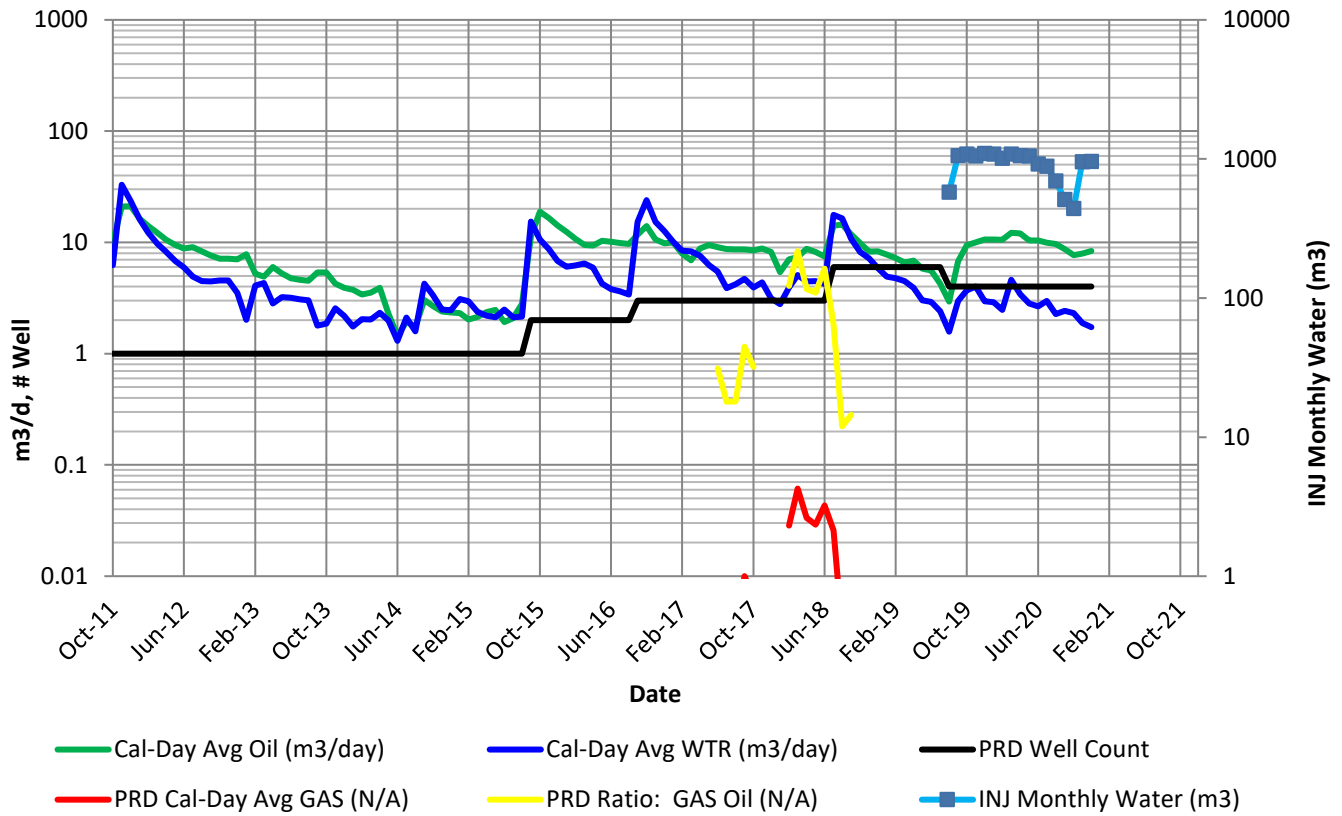
	Date	Oil Prod (m3/d)	Gas Prod (e3m3/d)	H2O Prod (m3/d)	H2O Inj (m3/d)	Monthly VRR	Cum VRR	Cum PRD Oil (m3)	Cum PRD Gas (e3m3)	Cum PRD Water (m3)	Cum INJ Water (m3)
EMU No.9	Dec-2020	8	-	2	31	3.98	0.399	27,087	8	18,685	15,518



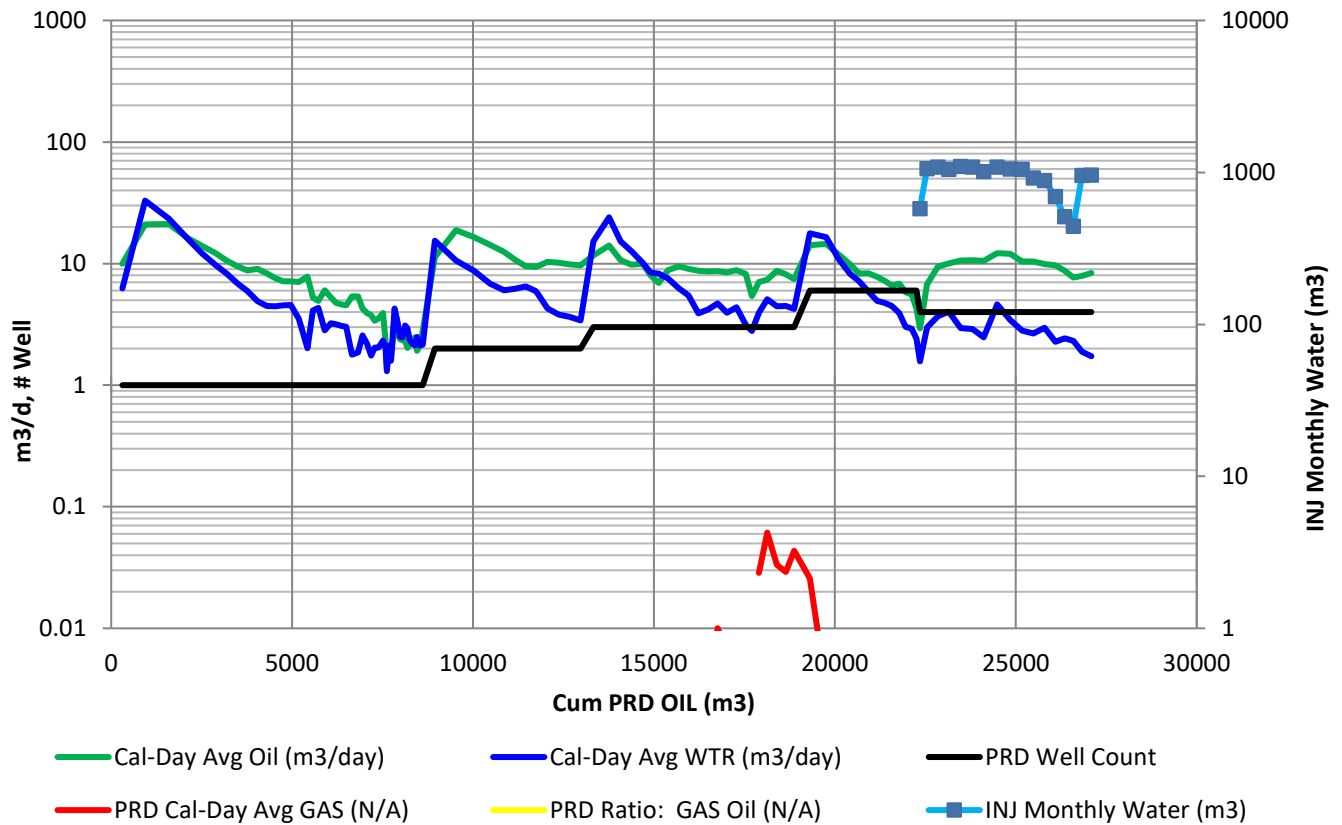
East Manson Unit No. 9 - VRR Table (Section 15 & 16-013-28W1)																										
Month	Days	Monthly Oil Prod (bbl)	Monthly Oil Prod (m3)	Monthly Gas Prod (E3m3)	Monthly H2O Prod (bbl)	Monthly H2O Prod (m3)	Monthly H2O Inj (bbl)	Monthly H2O Inj (m3)	Oil Prod (m3/d)	Gas Prod (E3m3/d)	H2O Prod (m3/d)	H2O Inj (m3/d)	Cum Oil (bbl)	Cum Oil (m3)	Cum Gas (E3m3)	Cum H2O (m3)	Cum H2O Inj (m3)	Prod Well Count	GOR (m3/m3)	H2OCut %	Voidage (rm3/d)	Monthly VRR	Cum GOR (m3/m3)	H2OCut %	Cum Void (rm3)	Cum VRR
Oct-11	31	1,946	309.3	0	1,216	193.3	0	0	10	0	6	0	1,946	309	0	193	0	1	0	38.5%	14	0.00	0.0	38.5%	420.1	0.000
Nov-11	30	3,965	630.3	0	6,223	989.4	0	0	21	0	33	0	5,910	940	0	1183	0	1	0	61.1%	48	0.00	0.0	55.7%	1874.6	0.000
Dec-11	31	4,127	656.1	0	4,573	727.0	0	0	21	0	23	0	10,037	1596	0	1910	0	1	0	52.6%	39	0.00	0.0	54.5%	3084.2	0.000
Jan-12	31	3,185	506.4	0	3,133	498.1	0	0	16	0	16	0	13,223	2102	0	2408	0	1	0	49.6%	28	0.00	0.0	53.4%	3954.6	0.000
Feb-12	29	2,551	405.6	0	2,223	353.5	0	0	14	0	12	0	15,774	2508	0	2761	0	1	0	46.6%	22	0.00	0.0	52.4%	4605.9	0.000
Mar-12	31	2,372	377.2	0	1,894	301.1	0	0	12	0	10	0	18,146	2885	0	3062	0	1	0	44.4%	19	0.00	0.0	51.5%	5183.9	0.000
Apr-12	30	1,991	316.5	0	1,547	246.0	0	0	11	0	8	0	20,137	3201	0	3308	0	1	0	43.7%	16	0.00	0.0	50.8%	5662.3	0.000
May-12	31	1,851	294.3	0	1,333	211.9	0	0	9	0	7	0	21,989	3496	0	3520	0	1	0	41.9%	14	0.00	0.0	50.2%	6090.1	0.000
Jun-12	30	1,662	264.2	0	1,125	178.9	0	0	9	0	6	0	23,650	3760	0	3699	0	1	0	40.4%	12	0.00	0.0	49.6%	6462.8	0.000
Jul-12	31	1,766	280.7	0	958	152.3	0	0	9	0	5	0	25,416	4041	0	3851	0	1	0	35.2%	12	0.00	0.0	48.8%	6820.7	0.000
Aug-12	31	1,622	257.8	0	873	138.8	0	0	8	0	4	0	27,038	4299	0	3990	0	1	0	35.0%	11	0.00	0.0	48.1%	7148.4	0.000
Sep-12	30	1,436	228.3	0	841	133.8	0	0	8	0	4	0	28,474	4527	0	4124	0	1	0	36.9%	10	0.00	0.0	47.7%	7449.5	0.000
Oct-12	31	1,389	220.9	0	885	140.8	0	0	7	0	5	0	29,863	4748	0	4265	0	1	0	38.9%	10	0.00	0.0	47.3%	7752.2	0.000
Nov-12	30	1,347	214.1	0	861	136.9	0	0	7	0	5	0	31,210	4962	0	4402	0	1	0	39.0%	10	0.00	0.0	47.0%	8046.1	0.000
Dec-12	31	1,375	218.6	0	684	108.7	0	0	7	0	4	0	32,585	5180	0	4510	0	1	0	33.2%	9	0.00	0.0	46.5%	8314.9	0.000
Jan-13	31	1,529	243.1	0	393	62.5	0	0	8	0	2	0	34,114	5424	0	4573	0	1	0	20.5%	8	0.00	0.0	45.7%	8555.3	0.000
Feb-13	28	921	146.5	0	723	115.0	0	0	5	0	4	0	35,036	5570	0	4688	0	1	0	44.0%	8	0.00	0.0	45.7%	8777.7	0.000
Mar-13	31	963	153.1	0	841	133.7	0	0	5	0	4	0	35,998	5723	0	4821	0	1	0	46.6%	8	0.00	0.0	45.7%	9023.8	0.000
Apr-13	30	1,136	180.6	0	534	84.9	0	0	6	0	3	0	37,134	5904	0	4906	0	1	0	32.0%	7	0.00	0.0	45.4%	9241.0	0.000
May-13	31	1,027	163.3	0	629	100.0	0	0	5	0	3	0	38,161	6067	0	5006	0	1	0	38.0%	7	0.00	0.0	45.2%	9460.7	0.000
Jun-13	30	899	142.9	0	599	95.2	0	0	5	0	3	0	39,060	6210	0	5102	0	1	0	40.0%	7	0.00	0.0	45.1%	9660.7	0.000
Jul-13	31	898	142.8	0	599	95.2	0	0	5	0	3	0	39,958	6353	0	5197	0	1	0	40.0%	6	0.00	0.0	45.0%	9860.7	0.000
Aug-13	31	883	140.4	0	589	93.6	0	0	5	0	3	0	40,841	6493	0	5291	0	1	0	40.0%	6	0.00	0.0	44.9%	10057.3	0.000
Sep-13	30	1,011	160.8	0	337	53.5	0	0	5	0	2	0	41,852	6654	0	5344	0	1	0	25.0%	6	0.00	0.0	44.5%	10228.4	0.000
Oct-13	31	1,045	166.2	0	363	57.7	0	0	5	0	2	0	42,897	6820	0	5402	0	1	0	25.8%	6	0.00	0.0	44.2%	10407.7	0.000
Nov-13	30	804	127.9	0	484	76.9	0	0	4	0	3	0	43,701	6948	0	5479	0	1	0	37.6%	6	0.00	0.0	44.1%	10578.4	0.000
Dec-13	31	763	121.4	0	427	67.8	0	0	4	0	2	0	44,465	7069	0	5547	0	1	0	35.9%	5	0.00	0.0	44.0%	10735.2	0.000
Jan-14	31	732	116.4	0	342	54.4	0	0	4	0	2	0	45,197	7185	0	5601	0	1	0	31.9%	5	0.00	0.0	43.8%	10874.8	0.000
Feb-14	28	598	95.0	0	359	57.0	0	0	3	0	2	0	45,794	7281	0	5658	0	1	0	37.5%	5	0.00	0.0	43.7%	11001.5	0.000
Mar-14	31	691	109.9	0	396	63.0	0	0	4	0	2	0	46,485	7390	0	5721	0	1	0	36.5%	5	0.00	0.0	43.6%	11145.0	0.000
Apr-14	30	739	117.5	0	439	69.8	0	0	4	0	2	0	47,224	7508	0	5791	0	1	0	37.3%	5	0.00	0.0	43.5%	11301.0	0.000
May-14	31	446	70.8	0	388	61.6	0	0	2	0	2	0	47,670	7579	0	5853	0	1	0	46.5%	4	0.00	0.0	43.6%	11414.6	0.000
Jun-14	30	272	43.3	0	246	39.1	0	0	1	0	1	0	47,942	7622	0	5892	0	1	0	47.5%	2	0.00	0.0	43.6%	11485.6	0.000
Jul-14	31	378	60.0	0	411	65.3	0	0	2	0	2	0	48,320	7682	0	5957	0	1	0	52.1%	4	0.00	0.0	43.7%	11595.0	0.000
Aug-14	31	340	54.1	0	310	49.2	0	0	2	0	2	0	48,660	7736	0	6006	0	1	0	47.6%	3	0.00	0.0	43.7%	11684.0	0.000
Sep-14	30	574	91.2	0	805	128.0	0	0	3	0	4	0	49,234	7827	0	6134	0	1	0	58.4%	7	0.00	0.0	43.9%	11879.2	0.000
Oct-14	31	521	82.8	0	653	103.7	0	0	3	0	3	0	49,755	7910	0	6238	0	1	0	55.6%	5	0.00	0.0	44.1%	12044.0	0.000
Nov-14	30	451	71.7	0	471	74.9	0	0	2	0	2	0	50,206	7982	0	6313	0	1	0	51.1%	4	0.00	0.0	44.2%	12171.7	0.000
Dec-14	31	456	72.5	0	478	76.0	0	0	2	0	2	0	50,663	8054	0	6389	0	1	0	51.2%	4	0.00	0.0	44.2%	12301.0	0.000
Jan-15	31	451	71.6	0	602	95.7	0	0	2	0	3	0	51,113	8126	0	6485	0	1	0	57.2%	5	0.00	0.0	44.4%	12449.5	0.000
Feb-15	28	357	56.7	0	520	82.7	0	0	2	0	3	0	51,470	8183	0	6567	0	1	0	59.3%	4	0.00	0.0	44.5%	12574.1	0.000
Mar-15	31	417	66.2	0	463	73.6	0	0	2	0	2	0	51,887	8249	0	6641	0	1	0	52.6%	4	0.00	0.0	44.6%	12696.5	0.000
Apr-15	30	445	70.7	0	415	65.9	0	0	2	0	2	0	52,332	8320	0	6707	0	1	0	48.2%	4	0.00	0.0	44.6%	12814.4	0.000
May-15	31	482	76.6	0	413	65.7	0	0	2	0	2	0	52,814	8396	0	6773	0	1	0	46.2%	4	0.00	0.0	44.6%	12936.4	0.000
Jun-15	30	362	57.6	0	471	74.8	0	0	2	0	2	0	53,176	8454	0	6848	0	1	0	56.5%	4	0.00	0.0	44.8%	13053.7	0.000
Jul-15	31	407	64.7	0	414	65.8	0	0	2	0	2	0	53,583	8519	0	6913	0	1	0	50.4%	4	0.00	0.0	44.8%	13167.1	0.000
Aug-15	31	549	87.2	0	420	66.8	0	0	3	0	2	0	54,132	8606	0	6980	0	1	0	43.4%	4	0.00	0.0	44.8%	13297.9	0.000
Sep-15	30	2,136	339.6	0	2,903	461.5	0	0	11	0	15	0	56,268	8946	0	7442	0	2	0	57.6%	24	0.00	0.0	45.4%	14009.7	0.000
Oct-15	31	3,676	584.5	0	2,065	328.3	0	0	19	0	11	0	59,944	9530	0	7770	0	2	0	36.0%	24	0.00	0.0	44.9%	14766.3	0.000
Nov-15	30	3,114	495.1	0	1,647	261.8	0	0	17	0	9	0	63,058	10025	0	8032	0	2	0	34.6%	21	0.00	0.0	44.5%	15390.9	0.000
Dec-15	31	2,779	441.8	0	1,333	211.9	0	0	14	0	7	0	65,837	10467	0	8244	0	2	0	32.4%	17	0.00	0.0	44.1%	15926.4	0.000
Jan-16	31	2,434	387.0	0	1,179	187.4	0	0	12	0	6	0	68,271	10854	0	8431	0	2	0	32.6%	15	0.00	0.0	43.7%	16397.2	0.000
Feb-16	29	1,958	311.3	0	1,135	180.5	0	0	11	0	6	0	70,230	11165	0	8612	0	2	0	36.7%	14	0.00	0.0	43.5%	16805.9	0.000
Mar-16	31	1,851	294.2	0	1,264	200.9	0	0	9	0	6	0	72,080	11460	0	8813	0	2	0	40.6%	13	0.00	0.0	43.5%	17222.6	0.000
Apr-16	30	1,766	280.8	0	1,119	177.9	0	0	9	0	6	0	73,847	11740	0	8990	0	2	0	38.8%	13	0.00	0.0	43.4%	17606.4	0.0

East Manson Unit No. 9 - VRR Table (Section 15 & 16-013-28W1)																										
Month	Days	Monthly Oil Prod (bbl)	Monthly Oil Prod (m3)	Monthly Gas Prod (E3m3)	Monthly H2O Prod (bbl)	Monthly H2O Prod (m3)	Monthly H2O Inj (bbl)	Monthly H2O Inj (m3)	Oil Prod (m3/d)	Gas Prod (E3m3/d)	H2O Prod (m3/d)	H2O Inj (m3/d)	Cum Oil (bbl)	Cum Oil (m3)	Cum Gas (E3m3)	Cum H2O (m3)	Cum H2O Inj (m3)	Prod Well Count	GOR (m3/m3)	H2OCut %	Voidage (rm3/d)	Monthly VRR	Cum GOR (m3/m3)	H2OCut %	Cum Void (rm3)	Cum VRR
Jun-17	30	1,705	271.0	0.2	1,033	164.3	0	0	9	0	5	0	100,368	15957	0	12898	0	3	1	37.7%	13	0.00	0.0	44.7%	24625.8	0.000
Jul-17	31	1,699	270.1	0.1	758	120.6	0	0	9	0	4	0	102,067	16227	0	13018	0	3	0	30.9%	10	0.00	0.0	44.5%	24951.2	0.000
Aug-17	31	1,685	267.9	0.1	819	130.3	0	0	9	0	4	0	103,752	16495	0	13149	0	3	0	32.7%	11	0.00	0.0	44.4%	25284.8	0.000
Sep-17	30	1,636	260.0	0.3	887	141.1	0	0	9	0	5	0	105,388	16755	1	13290	0	3	1	35.2%	12	0.00	0.0	44.2%	25637.6	0.000
Oct-17	31	1,652	262.6	0.2	769	122.3	0	0	8	0	4	0	107,040	17017	1	13412	0	3	1	31.8%	11	0.00	0.1	44.1%	25966.4	0.000
Nov-17	30	1,667	265.0	0	826	131.4	0	0	9	0	4	0	108,707	17282	1	13543	0	3	0	33.1%	11	0.00	0.1	43.9%	26291.9	0.000
Dec-17	31	1,599	254.2	0.2	612	97.2	0	0	8	0	3	0	110,306	17537	1	13641	0	3	1	27.7%	10	0.00	0.1	43.8%	26589.4	0.000
Jan-18	31	1,056	167.9	0	544	86.5	0	0	5	0	3	0	111,362	17705	1	13727	0	3	0	34.0%	7	0.00	0.1	43.7%	26798.9	0.000
Feb-18	28	1,241	197.3	0.8	693	110.2	0	0	7	0	4	0	112,603	17902	2	13837	0	3	4	35.8%	11	0.00	0.1	43.6%	27110.4	0.000
Mar-18	31	1,435	228.1	1.9	992	157.8	0	0	7	0	5	0	114,037	18130	4	13995	0	3	8	40.9%	15	0.00	0.2	43.6%	27570.0	0.000
Apr-18	30	1,651	262.5	1	841	133.8	0	0	9	0	4	0	115,689	18392	5	14129	0	3	4	33.8%	13	0.00	0.3	43.4%	27966.9	0.000
May-18	31	1,597	253.8	0.9	876	139.3	0	0	8	0	4	0	117,285	18646	6	14268	0	3	4	35.4%	13	0.00	0.3	43.3%	28355.8	0.000
Jun-18	30	1,410	224.1	1.3	799	127.1	0	0	7	0	4	0	118,695	18870	7	14395	0	3	6	36.2%	13	0.00	0.4	43.3%	28739.2	0.000
Jul-18	31	2,757	438.3	0.8	3,459	550.0	0	0	14	0	18	0	121,452	19309	8	14945	0	6	2	55.6%	30	0.00	0.4	43.6%	29668.5	0.000
Aug-18	31	2,831	450.0	0.1	3,207	509.8	0	0	15	0	16	0	124,282	19759	8	15455	0	6	0	53.1%	27	0.00	0.4	43.9%	30516.5	0.000
Sep-18	30	2,229	354.4	0.1	2,030	322.7	0	0	12	0	11	0	126,511	20113	8	15778	0	6	0	47.7%	20	0.00	0.4	44.0%	31106.7	0.000
Oct-18	31	1,924	305.8	0	1,602	254.7	0	0	10	0	8	0	128,435	20419	8	16033	0	6	0	45.4%	15	0.00	0.4	44.0%	31586.0	0.000
Nov-18	30	1,563	248.5	0	1,352	214.9	0	0	8	0	7	0	129,998	20667	8	16247	0	6	0	46.4%	13	0.00	0.4	44.0%	31983.4	0.000
Dec-18	31	1,617	257.0	0	1,151	183.0	0	0	8	0	6	0	131,615	20924	8	16430	0	6	0	41.6%	12	0.00	0.4	44.0%	32354.9	0.000
Jan-19	31	1,514	240.7	0	960	152.7	0	0	8	0	5	0	133,129	21165	8	16583	0	6	0	38.8%	11	0.00	0.4	43.9%	32684.0	0.000
Feb-19	28	1,272	202.3	0	837	133.1	0	0	7	0	5	0	134,401	21367	8	16716	0	6	0	39.7%	10	0.00	0.4	43.9%	32965.5	0.000
Mar-19	31	1,288	204.7	0	875	139.2	0	0	7	0	4	0	135,689	21572	8	16855	0	6	0	40.5%	9	0.00	0.4	43.9%	33254.7	0.000
Apr-19	30	1,292	205.4	0	738	117.4	0	0	7	0	4	0	136,981	21778	8	16973	0	6	0	36.4%	9	0.00	0.4	43.8%	33522.6	0.000
May-19	31	1,132	180.0	0	590	93.7	0	0	6	0	3	0	138,113	21958	8	17066	0	6	0	34.2%	7	0.00	0.4	43.7%	33748.2	0.000
Jun-19	30	1,052	167.3	0	551	87.6	0	0	6	0	3	0	139,165	22125	8	17154	0	6	0	34.4%	7	0.00	0.4	43.7%	33958.4	0.000
Jul-19	31	831	132.1	0	470	74.7	0	0	4	0	2	0	139,996	22257	8	17229	0	6	0	36.1%	6	0.00	0.4	43.6%	34129.9	0.000
Aug-19	31	572	90.9	0	306	48.7	3,623	576	3	0	2	19	140,568	22348	8	17277	576	4	0	34.9%	4	5.02	0.4	43.6%	34245.3	0.017
Sep-19	30	1,275	202.7	0	563	89.5	6,648	1,057	7	0	3	35	141,843	22550	8	17367	1633	4	0	30.6%	8	4.46	0.4	43.5%	34483.3	0.048
Oct-19	31	1,843	292.9	0	721	114.6	6,829	1,086	9	0	4	35	143,685	22843	8	17482	2719	4	0	28.1%	11	3.32	0.4	43.4%	34812.2	0.078
Nov-19	30	1,892	300.8	0	758	120.5	6,600	1,049	10	0	4	35	145,577	23144	8	17602	3768	4	0	28.6%	11	3.10	0.3	43.2%	35152.9	0.108
Dec-19	31	2,068	328.8	0	576	91.6	6,880	1,094	11	0	3	35	147,645	23473	8	17694	4862	4	0	21.8%	11	3.31	0.3	43.0%	35485.0	0.138
Jan-20	31	2,075	330.0	0	565	89.8	6,823	1,085	11	0	3	35	149,721	23803	8	17784	5947	4	0	21.4%	11	3.29	0.3	42.8%	35816.1	0.167
Feb-20	29	1,924	305.9	0	451	71.7	6,377	1,014	11	0	2	35	151,645	24109	8	17855	6960	4	0	19.0%	10	3.45	0.3	42.5%	36111.6	0.194
Mar-20	31	2,381	378.5	0	898	142.8	6,828	1,086	12	0	5	35	154,026	24487	8	17998	8046	4	0	27.4%	14	2.60	0.3	42.4%	36531.3	0.221
Apr-20	30	2,266	360.3	0	646	102.7	6,629	1,054	12	0	3	35	156,292	24848	8	18101	9100	4	0	22.2%	12	2.89	0.3	42.1%	36897.6	0.248
May-20	31	2,032	323.0	0	549	87.3	6,596	1,049	10	0	3	34	158,324	25171	8	18188	10149	4	0	21.3%	10	3.26	0.3	41.9%	37221.2	0.274
Jun-20	30	1,965	312.4	0	501	79.6	5,788	920	10	0	3	31	160,289	25483	8	18268	11069	4	0	20.3%	10	3.00	0.3	41.8%	37529.3	0.296
Jul-20	31	1,938	308.1	0	580	92.1	5,569	885	10	0	3	29	162,227	25791	8	18360	11954	4	0	23.0%	10	2.80	0.3	41.6%	37846.8	0.317
Aug-20	31	1,883	299.4	0	444	70.5	4,368	694	10	0	2	22	164,110	26091	8	18430	12648	4	0	19.1%	9	2.41	0.3	41.4%	38136.3	0.333
Sep-20	30	1,648	262.0	0	459	72.9	3,218	512	9	0	2	17	165,759	26353	8	18503	13160	4	0	21.8%	9	1.94	0.3	41.3%	38400.9	0.344
Oct-20	31	1,495	237.6	0	452	71.9	2,778	442	8	0	2	14	167,253	26590	8	18575	13602	4	0	23.2%	8	1.81	0.3	41.1%	38646.6	0.354
Nov-20	30	1,498	238.2	0	355	56.4	6,008	955	8	0	2	32	168,751	26829	8	18632	14557	4	0	19.2%	8	4.16	0.3	41.0%	38877.2	0.376
Dec-20	31	1,628	258.8	0	337	53.6	6,045	961	8	0	2	31	170,379	27087	8	18685	15518	4	0	17.2%	8	3.98	0.3	40.8%	39120.0	0.399

### East Manson Unit No. 9 - Rate Time



### East Manson Unit No. 9 - Rate Cum

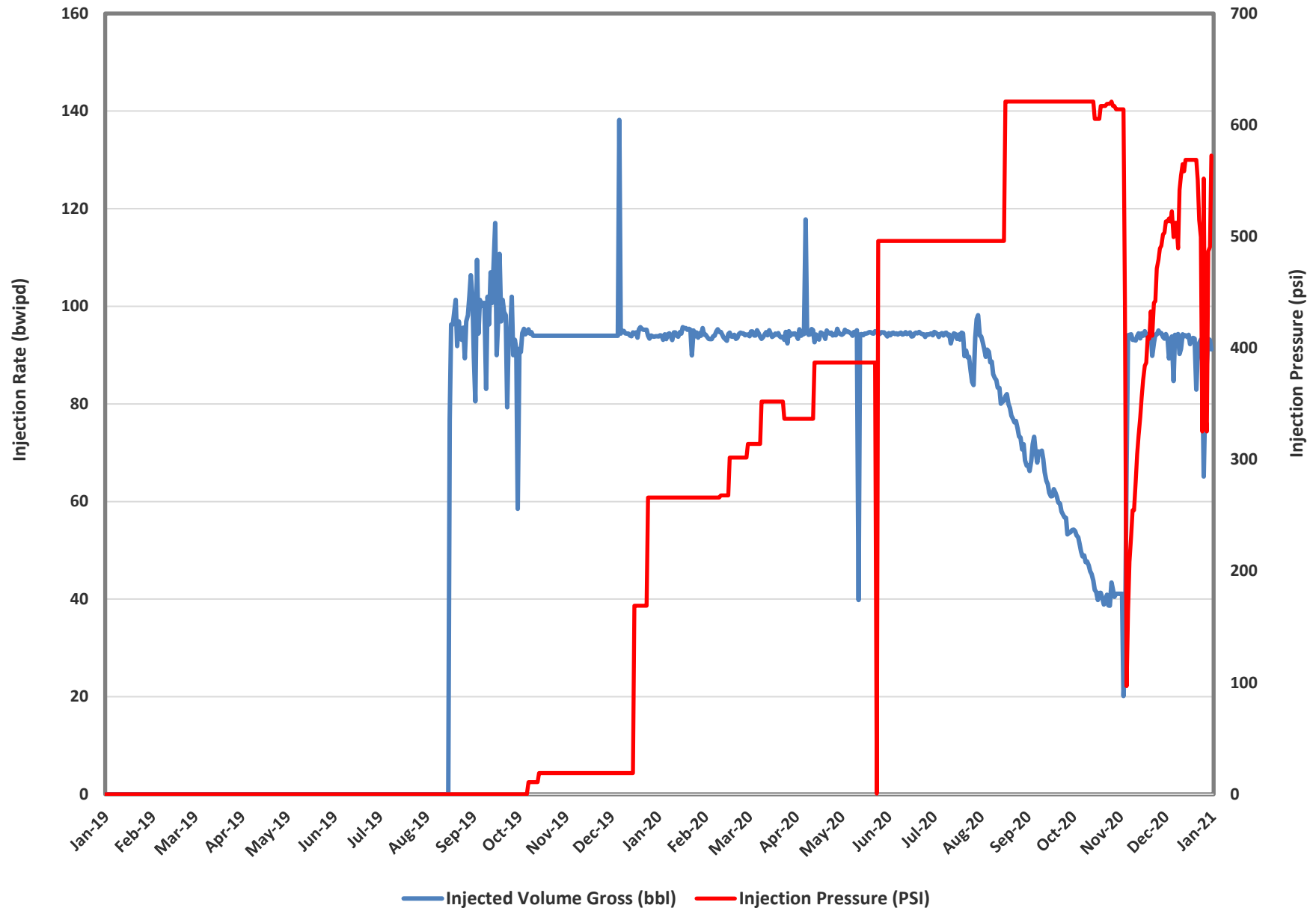


### East Manson Unit No. 9 - Injection Parameters

Month	Oil Rate (m3/d)	Gas Rate (e3m3/d)	Water Rate (m3/d)	Water Inj Rate (m3/d)	Cum Oil (m3)	Cum Gas (e3m3)	Cum Water (m3)	Cum Inj Water (m3)	GOR (m3/m3)	WOR (m3/m3)
Jan-19	7.8	0.0	4.9	0.0	21,165	8.0	16,583	0.0	0	0.63
Feb-19	7.2	0.0	4.8	0.0	21,367	8.0	16,716	0.0	0	0.66
Mar-19	6.6	0.0	4.5	0.0	21,572	8.0	16,855	0.0	0	0.68
Apr-19	6.8	0.0	3.9	0.0	21,778	8.0	16,973	0.0	0	0.57
May-19	5.8	0.0	3.0	0.0	21,958	8.0	17,066	0.0	0	0.52
Jun-19	5.6	0.0	2.9	0.0	22,125	8.0	17,154	0.0	0	0.52
Jul-19	4.3	0.0	2.4	0.0	22,257	8.0	17,229	0.0	0	0.57
Aug-19	2.9	0.0	1.6	18.6	22,348	8.0	17,277	576.1	0	0.54
Sep-19	6.8	0.0	3.0	35.2	22,550	8.0	17,367	1632.9	0	0.44
Oct-19	9.4	0.0	3.7	35.0	22,843	8.0	17,482	2718.6	0	0.39
Nov-19	10.0	0.0	4.0	35.0	23,144	8.0	17,602	3767.9	0	0.40
Dec-19	10.6	0.0	3.0	35.3	23,473	8.0	17,694	4861.7	0	0.28

Month	02/10-16 Inj Press. (psi)	00/15-16 Inj Press. (psi)
Jan-19	266	621
Feb-19	283	366
Mar-19	338	446
Apr-19	367	512
May-19	399	548
Jun-19	496	633
Jul-19	496	633
Aug-19	557	629
Sep-19	621	624
Oct-19	617	618
Nov-19	391	397
Dec-19	517	571

02/10-16-013-28W1 Rate vs Pressure





00/15-16-013-28W1 Rate vs Pressure

